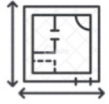


HOW TO MEASURE THE SPACE



1 DRAW A ROUGH SKETCH OF YOUR ROOM

Please note South position

This doesn't need to be a work of art or perfectly to scale. You can draw it in pencil, so you can easily erase! It's more important your measurements are accurate. See examples on the second page.



2 TAPE MEASURE

A longer tape measure is best. Millimetres are preferred but measure in the units you are most comfortable with.



3 MEASURE THE OVERALL ROOM

Start by measuring the overall LENGTH and WIDTH of the room. We will add in smaller measurements afterwards. The smaller measurements will add up to our overall width and length



4 FIXTURES & ARCHITECTURAL DETAILS

Please note and measure the height and width of anything you'll need to work around

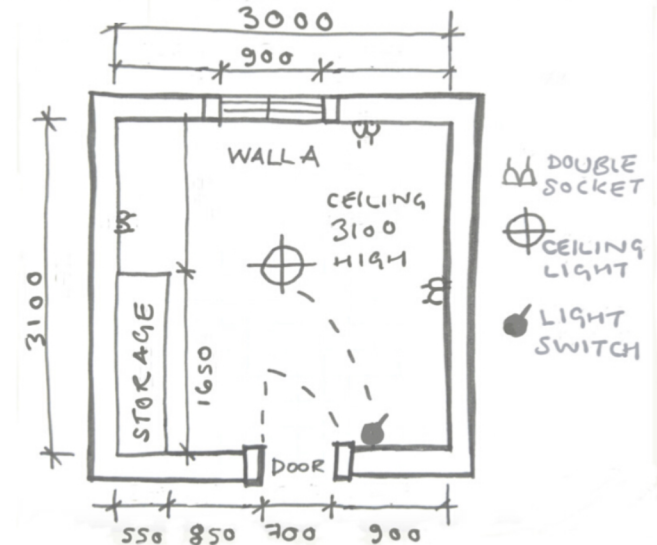
- Windows (width, height and height from the floor)
- Doors (door width and height)
- Ceiling height

IF RELEVANT - PLEASE NOTE:

- Sockets and switches
- Air conditioning
- Light fixtures

EXAMPLES

1 FLOOR PLAN



2 ELEVATIONS (EACH WALL IN THE ROOM)

